

CLASS 7

Coins of this class were studied in detail by D Greenhalgh ('The Fox Class Seven Pence of Edward I' - *BNJ* 1989). In addition to the two types listed below, he lists a transitional type with the short hair of 7a and the crown of 7b. His further sub-divisions are based on letter shapes. If we are to be strictly chronological, 7b was struck before 7a, and both probably struck before class 6.

Mints : London, Bury St Edmunds, Canterbury and Durham.
Closed Cs and Es (from here onwards) with smaller lettering.
Almond-shaped eyes.

Some coins have a rose on the neck.
Sometimes double-barred Ns.



double-barred N



rose on neck



actual size



double-barred N and continuous S

7a Wide crown with outward-curving sides as class 5. Hair short or long. The letter S is composite or continuous. London and Canterbury coins have a rose on the neck and double-barred Ns.

Mints : London, Bury St Edmunds and Canterbury.

+ EDW R' ANGL' DNS hYB
+ EDW R' ANGL' DNS YB'



7a crown



7a

wide crown

7b Tall crown with less-splayed side fleurs. The left ornament is hook-shaped. Several faces.

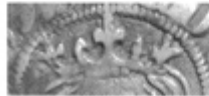
The letter S is composite or continuous. London coins (only) have a rose on the neck and double-barred Ns.
Mints : London, Canterbury and Durham.

+ EDW R' ANGL' DNS hYB

A very few coins of Durham exist with the curious combination of crown and face, including almond eyes, as 7b, but earlier (class 4) large lettering with an open C, and no rose on the neck.



7b crown



7b

oval face



square chin



Durham, no rose on neck
lettering as class 4
(large letters, open C)